

When in Doubt,
Start Here!

I get this every
year too.



Take care of your body with advanced medical screening

MRI

MRI Options

Brain MRI	Exam Duration: 20 mins	¥ 22,000
Cardiac MRI	Exam Duration: 45 mins	¥ 44,000
Pancreas Screening (MRI + Tumor Markers)	Exam Duration: 40 mins	¥ 29,700
Pelvic MRI	Exam Duration: 25 mins	¥ 22,000
Whole-Body Cancer Screening	Exam Duration: 40 mins	¥ 66,000

mins are approximate and may vary.

Reservation Required

A sound mind in a sound body.

CT

CT Options

Chest CT scan	Exam Duration: 5 mins	¥ 7,700
Chest & Abdominal CT scan	Exam Duration: 10 mins	¥ 11,000
Chest, Abdomen & Visceral Fat CT scan	Exam Duration: 10 mins	¥ 12,100
Abdominal & Visceral Fat CT scan	Exam Duration: 10 mins	¥ 8,800

Abdominal and visceral fat tests available ▶ See p.10

All prices include tax.

When in doubt, brain MRI and chest CT are great choices

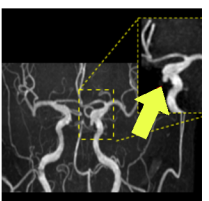
Brain diseases can strike suddenly, even in those who appear perfectly healthy. **These conditions can lead to impairments in movement, speech, and other essential abilities** for daily life and work. While early detection is ideal, many brain conditions manifest without warning.

Brain blood vessels seen by MRI



What is Stenosis?

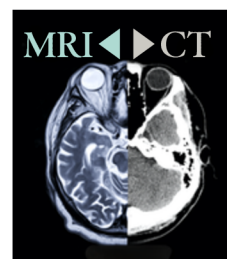
Stenosis occurs when the inside of a blood vessel narrows due to the hardening of the arteries. This reduced blood flow increases the risk of a stroke.



What is an Aneurysm?

An aneurysm is a bulging area where a blood vessel wall has become thin and weak. If pressure increases, it may rupture, causing a subarachnoid hemorrhage.

For those concerned about Brain health



MRI provides detailed views of the brain, offering clearer images of internal structures compared to CT.

MRI offers a clear view of both the brain and blood vessels. Since lifestyle habits and stress can affect vascular health, this screening is highly recommended for those with high blood pressure, women balancing work and family, and men in demanding professional roles.

Optional add-on available only for MRI patients

VSRAD Screening + **Dementia Self-Checker**

Dementia Prevention Option
¥ 8,800
Tax included

A chest CT scan is the best way to find it early.

Lung cancer is the leading cause of cancer deaths. A chest CT scan is the most effective way to detect it early. **It can identify a wide range of lung changes, including very small abnormalities.** The scan takes only a few minutes, and our clinic uses low-dose CT to minimize radiation exposure.

We also offer abdominal CT scans for a quick internal check-up and visceral fat CT scans for those concerned about abdominal health. Discounts are available for combined scans, and they can be added to your appointment on the day of your visit.

For more details on CT options, please see page 10. ▶

Cancer deaths by body site (2022)

	No. 1	2nd	3rd
Men	Lung	Large Intestine	Stomach
Women	Large Intestine	Lung	Pancreas
Total	Lung	Large Intestine	Stomach

Cancer Statistics 2024 (Foundation for Cancer Research Promotion)

Differences between chest X-ray and chest CT

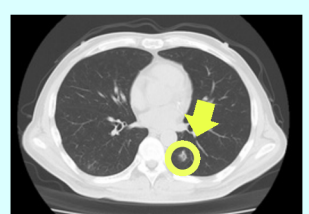
Images showing the abnormal finding

Chest X-ray



Not visible on X-rays

Chest CT



Clearly visualizes lung cancer as a white shadow

Recommended Optional Tests

- Same-day applications may be accepted at the counter if slots are available.
- Many other tests can also be added on the day of your visit.
- Items with this mark have limited availability; please reserve in advance by phone.

To request optional tests, please complete the optional test application Form.



Premium option package

Since your MRI scan may take some time, you are welcome to bring a DVD to watch during the procedure. Please consult with the radiologic technologist on the day of your visit regarding volume adjustments.

Mark	Code	Package name	Recommended Age	Test details	Price (tax included)	Test duration (min)
	A1	Director Kako's Premium Package A comprehensive full-body screening for sudden illnesses and hard-to-detect cancers.	45+	Chest CT + Abdominal CT / Brain MRI / Cardiac MRI / Whole-body Cancer Screening (DWIBS) / Tumor Markers CEA + CA19-9 / PSA (Men) / ROMA (Women) Endoscopy requests during the health check will be guaranteed.	Men ¥ 149,160 Woman ¥ 152,240	150
	A2	Premium Package for Women Recommended by our female physician A package designed for women who prioritize their long-term health for the next decade.	40+	Mammography / Cervical Cancer Test + Transvaginal Ultrasound / Brain MRI / Gut Flora Scan (At-Home Test Kit)	¥ 47,850	60
	A3	Premium Package for Men Recommended by our male physician A recommended biennial screening for men focused on maintaining peak performance.	40+	Chest CT + Abdominal CT / Brain MRI / Cardiac MRI / Tumor Marker PSA	¥ 78,760	90
	A4	Premium Package An Optional Add-On Set to Enhance Your Annual Health Check.	40+	Chest CT + Abdominal CT / Brain MRI Early detection of lung cancer, abdominal organ check, and brain assessment	¥ 33,000	30

Premium Option

Since your MRI scan may take some time, you are welcome to bring a DVD to watch during the procedure. Please consult with the radiologic technologist on the day of your visit regarding volume adjustments.

	46	Whole-Body Cancer Screening (DWIBS)	45+	Whole-Body MRI Focused on Cancer (Neck to Pelvis)	¥ 66,000	40
	11	Cardiac MRI NEW	40+	A safe, non-invasive test that closely examines heart motion and blood flow—ideal for those seeking to prevent angina or heart attacks.	¥ 44,000	45
	18	Pancreas Screening (MRI + Tumor Markers) NEW	40+	A specialized assessment focused on the pancreas to identify hard-to-detect diseases.	¥ 29,700	40

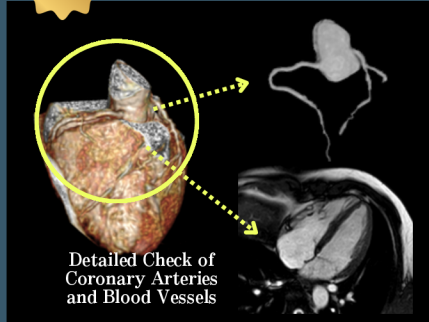
*You will need to take the required medicine for the test.

Times are approximate and may vary.

Cardiac MRI Is Now Available!

NEW

Even those in good health can suddenly develop serious conditions, and the most life-threatening often involve the brain or heart. Detecting coronary artery narrowing early can help prevent heart attacks with medication. This checkup is recommended for people in their active working years and for anyone who wants to stay healthy as they age.



Detailed Check of Coronary Arteries and Blood Vessels

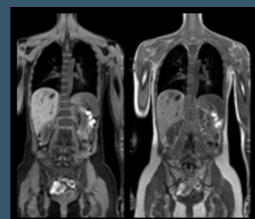
NEW
Option



Here is the webpage link for the MRI option

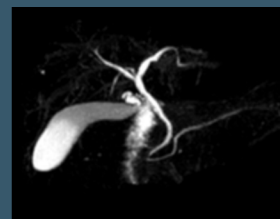
Whole-Body Cancer Screening (DWIBS)

A radiation-free imaging test that screens for cancer throughout the entire body in a single session.



Pancreatic Cancer Screening (MRI)

Pancreatic cancer develops deep within the body, making early detection exceptionally difficult. Because symptoms often remain hidden until the disease is advanced, our clinic offers specialized MRI screenings combined with tumor marker tests for a more comprehensive assessment.



Mark Guide

Appointment required (same-day visit possible if space is available)

Fasting required

Reservation & Inquiry Number
0567-26-7328
(Available in Japanese only)

• Weekdays 9:00-17:00
• Press 1 for guidance

Recommended Optional Tests for Women

Target	Mark	Code	Test name	Recommended Age	Test details	Price (tax included)	Test duration (min)
Brain		3	Brain MRI (Dementia Prevention Option - Available for an additional 8,800 yen)	35+	For the early detection of aneurysms—a risk even for young women—and subarachnoid hemorrhage, which becomes more common for those in their 30s and 40s.	¥ 22,000	20
Breast		25	Mammography	30+	Advanced equipment minimizes discomfort and radiation exposure, detecting micro-calcifications under 0.1 mm for high-precision screening.	¥ 4,400	10
		26	Mammography + Breast Ultrasound	25+	Recommended for individuals in their 20s and 30s, as well as those with dense breast tissue.	¥ 7,700	20
		27	3D Breast Ultrasound	35+	A female technician operates the system as it performs an automated 3D breast scan.	¥ 8,800	25
Uterus		30	Cervical Cancer Screening + Transvaginal Ultrasound	35+	Cervical cytology and ultrasound screening of the uterus and ovaries	¥ 8,250	10
		31	Pelvic MRI	40+	This scan provides clear images of the pelvic area and can detect various conditions affecting the uterus, ovaries, and bladder.	¥ 22,000	25
Thyroid		37	Thyroid Hormones (FT3, FT4, TSH)	40+	Tests for Overactive and Underactive Thyroid Function. For those concerned about fatigue, heart palpitations, sensitivity to heat or cold, irritability, and similar symptoms.	¥ 5,500	
Healthy Skin		24	Gut Flora Scan	20+	Analyzes your gut microbiome to provide personalized health tips and online nutrition guidance. Improve skin and wellness with this simple at-home sample collection kit	¥ 13,200	At Home Test

Recommended Optional Tests for Men

Target	Mark	Code	Test name	Recommended Age	Test details	Price (tax included)	Test duration (min)
prostate		34	PSA (Prostate Cancer Tumor Marker)	40+	Levels often rise in early prostate cancer. An essential test for men over 50.	¥ 1,760	
		35	Pelvic MRI	40+	A radiation-free, detailed MRI scan of the prostate and bladder.	¥ 22,000	25
Lung		4	Chest CT	35+	A high-precision scan for the early detection of lung cancer.	¥ 7,700	5
Cardiac		8	Lox-index	40+	A test that checks your risk of stroke or heart attack	¥ 13,200	
		10	Heart Health Check	35+	Check for heart-related conditions through a blood test	¥ 4,400	
		11	Cardiac MRI NEW	40+	Detect heart disease common in men before symptoms appear	¥ 44,000	45

Recommended Basic Package

Mark	Code	Package name	Recommended Age	Test details	Price (tax included)	Test duration (min)
	C1	Helicobacter Pylori and Abdominal Organ Check	20+	ABC Screening & Abdominal Ultrasound	¥ 9,900	15
	C2	Check for cancers in the chest and abdomen	40+	Chest CT + CEA and CA19-9 (Tumor Markers)	¥ 12,100	5
	C3	Women's Health Focus Package	40+	Thyroid Hormone & Bone Density Test (X-ray)	¥ 10,450	10
	C4	Lung and Prostate Cancer Test Package	40+	Chest CT & PSA	¥ 9,460	5
	C5	Tumor Marker Package	30+	CEA + CA19-9 Tumor markers used for various cancers	¥ 4,400	

List of All Optional Tests

- Same-day applications may be accepted at the counter if slots are available.
- Many other tests can also be added on the day of your visit.
- Items with this mark have limited availability; please reserve in advance by phone.

To request optional tests, please complete the optional test application Form.



Mark Guide

- Appointment required (same-day visit possible if space is available)
- What blood tests can reveal
- Fasting required
- Recommended options
- More details available via QR code

Reservation & Inquiry Number

0567-26-7328

(Available in Japanese only)

- Weekdays 9:00-17:00
- Press 1 for guidance

You can also split payments between a company and an individual.



Credit cards are accepted

Target	Mark	Code	Test name	Recommended Age	Test details	Price (tax included)	Test duration (min)
Brain		1	Lox-index	40+	Stroke and heart attack risk screening	¥ 13,200	
		2	MCI Screening Test Plus	40+	Test to check the risk of mild cognitive impairment	¥ 22,000	
		3	Brain MRI	35+	Brain vessel and brain health check Dementia prevention option - add for 8,800 yen	¥ 22,000	20
Lung		4	Chest CT	35+	A test that can detect lung cancer early	¥ 7,700	5
		5	Chest CT + Visceral Fat CT	40+	Lung cancer and visceral fat check	¥ 8,800	10
		6	Chest CT + Abdominal CT	40+	Quick check of lung cancer and major abdominal organs (liver, gallbladder, kidneys, pancreas, and spleen.)	¥ 11,000	10
Cardiac		7	Chest CT + Abdominal CT + Visceral Fat CT	40+	Comprehensive screening for lung cancer, major abdominal organs (liver, gallbladder, kidneys, pancreas, and spleen), and visceral fat levels.	¥ 12,100	10
		8	Lox-index	40+	Test to assess the risk of stroke and heart attack	¥ 13,200	
		9	NT-proBNP	40+	A hormone test to detect heart stress. Helps identify early or silent heart failure, angina, and risks of heart attack.	¥ 1,650	
Stomach		10	Heart Health Check	35+	A blood test to assess heart stress and detect early signs of heart conditions.	¥ 4,400	
		11	Cardiac MRI	40+	A safe, detailed scan of heart movement and blood flow. Ideal for the prevention of angina and heart attacks.	¥ 44,000	45
		12	Gastrointestinal Endoscopy	35+	Directly examines the esophagus, stomach, and duodenum to detect ulcers and early-stage cancer. It also screens for Helicobacter pylori, a primary cause of gastritis and ulcers, ensuring timely treatment.	¥ 17,600	30
	13	Stomach Endoscopy (Switching from Barium)	¥ 7,700			30	
Liver Gallbladder Kidneys Pancreas Spleen		14	ABC Screening	25+	A blood test for H. pylori, a bacteria linked to stomach cancer	¥ 4,400	
		15	abdominal ultrasound	25+	A detailed scan of major abdominal organs, including the liver, gallbladder, kidneys, pancreas, and spleen.	¥ 5,500	15
		16	Abdominal CT	35+	A rapid, high-precision scan of major abdominal organs (liver, gallbladder, kidneys, pancreas, and spleen)	¥ 7,700	5
Liver		17	Abdominal CT + Visceral Fat CT	35+	A rapid, high-precision scan of major abdominal organs (liver, gallbladder, kidneys, pancreas, and spleen) and visceral fat levels.	¥ 8,800	10
		18	Pancreas Checkup (MRI + Tumor Markers)	40+	Pancreas-focused test	¥ 29,700	30
Liver		19	Hepatitis B (HBs Antigen & Antibody Test)	20+	A test to check for past infection with the hepatitis B virus	¥ 2,200	
		20	Hepatitis C (HCV Antibody)	20+	A test to check for past hepatitis C virus infection	¥ 2,200	
		21	Kyokai Kenpo Hepatitis	35+ Up to 74	A hepatitis test with a one-time subsidy for Association Kenpo members <small>The application form can be filled out on the day of the checkup.</small>	¥ 540	
Kidney		22	Urea Nitrogen + Creatinine	40+	Shows abnormal values when kidney function declines due to diabetes or high blood pressure, when the kidneys become inflamed, or when tumors or stones block the urinary tract.	¥ 550	
Visceral Fat		23	Visceral Fat CT	25+	Capture real body cross-sections for accurate body fat measurement.	¥ 2,200	5
Skin		24	Gut Flora Scan	20+	This test measures your gut flora and provides personalized guidance to help you improve your health. It also includes online support from a nutrition professional, making it essential for those who wish to enhance their skin and overall wellness.	¥ 13,200	At Home Test

※Take the kit home and complete it there

Target	Mark	Code	Test name	Recommended Age	Test details	Price (tax included)	Test duration (min)
Breast		25	Mammography	30+	Advanced imaging designed to minimize discomfort and radiation. Capable of detecting micro-calcifications smaller than 0.1 mm.	¥ 4,400	10
		26	Mammography + Breast Ultrasound	25+	For women in their 20s and 30s or those with dense breast tissue. Ultrasound is used to examine high-density areas.	¥ 7,700	20
		27	3D Breast Ultrasound	35+	A female technician operates the system while the machine performs an automatic 3D breast scan.	¥ 8,800	25
Uterus		28	NCC-ST-439 (Tumor Marker)	35+	This test is intended to be used together with mammography and breast ultrasound. Abnormal values may also appear with pancreatic, biliary, or colorectal cancers, in addition to breast cancer.	¥ 2,420	
		29	Cervical Cancer Screening (Clinician-Collected) Add-on Human Papillomavirus Test (3,850 yen)	20+	Clinician-collected screenings offer the highest accuracy. Regular check-ups every two years are recommended for optimal prevention.	¥ 6,050	5
		30	Cervical Cancer Screening + Pelvic Ultrasound Add-on Human Papillomavirus Test (3,850 yen)	35+	Cervical cell exam (collected by a doctor) and ultrasound check of the uterus, ovaries, and other pelvic organs	¥ 8,250	10
prostate		31	Pelvic MRI (Gynecology)	40+	Clear imaging of the uterus and bladder is possible while keeping your clothes on and without radiation.	¥ 22,000	25
		32	CA125 (Tumor Marker)	35+	Values may be abnormal in ovarian cancer. <small>CA125 levels can rise during menstruation, which may affect the accuracy of the result. *Note</small>	¥ 2,640	
		33	ROMA Value (Ovarian Cancer Tumor Marker)	35+	Combining the tumor markers CA125 and HE4 improves the ability to distinguish between malignant and benign ovarian tumors. <small>*Note: Please refer to the CA125 details above.</small>	¥ 4,840	
prostate		34	PSA (Prostate Cancer Tumor Marker)	40+	A vital indicator for early-stage prostate cancer. This test is highly recommended for men over 50.	¥ 1,760	
		35	Pelvic MRI (Prostate)	40+	Detailed screening of the prostate and bladder without radiation	¥ 22,000	25
Uric Acid		36	Uric Acid	35+	You can see the levels that may trigger gout attacks.	¥ 220	
Thyroid		37	Thyroid Hormones (FT3, FT4, TSH)	40+	Checks for overactive or underactive thyroid. Recommended for those with fatigue, palpitations, or sensitivity to temperature.	¥ 5,500	
Osteoporosis		38	Bone Density Test (X-ray)	50+	Starting in 2026, our health screening center's bone density test has been upgraded, allowing more detailed analysis.	¥ 4,950	10
Eye		39	Fundus Exam & Intraocular Pressure Test	35+	[Fundus Exam] Helps find early signs of glaucoma and artery issues [Intraocular Pressure Test] Helps find glaucoma and retinal detachment	¥ 1,650	5
Tumor Marker		40	CEA	35+	Shows abnormal values in various cancers, including lung, digestive organs (mainly colon, stomach, pancreas), uterus, and ovaries.	¥ 2,200	
		41	AFP	35+	Shows abnormal values in liver cancer (hepatocellular carcinoma)	¥ 2,200	
		42	AFP + PIVKA - II	35+	Recommended for those with chronic liver disease. Measuring it together with AFP is said to improve the detection rate.	¥ 4,840	
		43	CA19-9	35+	Abnormal values may appear in cancers of the pancreas, gallbladder, bile ducts, and ovaries. They can also occur in other digestive organ cancers such as stomach or colon cancer, as well as lung cancer.	¥ 2,420	
Blood Sugar		44	HbA1c	30+	This test shows your average blood sugar level over the past one to two months and helps assess prediabetes or diabetes.	¥ 550	
Allergy		45	Allergy Test (View39)	20+	A single blood test checks 39 allergens at once, from inhaled to food-related, helping identify causes and improve daily living.	¥ 12,100	
Whole Body		46	Whole-Body Cancer Screening MRI (DWIBS)	45+	Whole-body MRI focused on cancer (neck to pelvis)	¥ 66,000	40
Others		47	Health Age (Biological Age Assessment)	20+	An indicator that estimates your biological age based on your health data. <small>This assessment requires the results of a blood test, urine test, blood pressure measurement, and BMI.</small>	¥ 1,650	